

ED School Climate Surveys



Safe Supportive Learning
Engagement | Safety | Environment

School Climate: What is it?



- **Reflects how members of the school community experience a school**
- **Includes factors that serve as conditions for learning**
- **Fosters social, physical, and emotional safety**
- **Provides support that enables students and staff to realize high behavioral and academic standards**
- **Encourages and maintains respectful, trusting, and caring relationships throughout the school community.**

Safe Support Schools/EDSCLS Model



Domain: Engagement

Topics:

Cultural and linguistic competence

Relationships

School participation

Domain: Safety

Topics:

Emotional safety

Physical safety

Bullying/
cyberbullying

Substance abuse

Emergency readiness/
management

Domain: Environment

Topics:

Physical environment

Instructional environment

Physical health

Mental health

Discipline



Two New Resources



- **ED's new school climate resources include :**
 - **Online school climate survey portal**—the ED School Climate Surveys (EDSCLS) that includes survey download and data reporting features
 - Web-based **School Climate Improvement Resource Package** to enable school climate survey use, data analysis, stakeholder engagement, and implementation of local school climate improvement processes
 - **ED Press Release:** <http://www.ed.gov/news/press-releases/department-education-releases-resources-improving-school-climate>



- **In early 2013, ED announced that a high priority would be placed on efforts to help the nation’s schools “create safer and more nurturing school climates.”**
- **ED’s Office of Safe and Healthy Students provided funds to NCES to develop a school climate measurement platform available to schools, school districts and states which will provide valid and reliable measures of school climate.**



- Middle grade (5-8) students
- High school students
- Parents / Guardians
- Teachers
- Non-instructional staff (including principals)



- **Can be administered at school, district, or state level.**
- **Allows for the local storage of data, accessible only to authorized users.**
- **Multiple surveys (i.e., students, instructional staff, non-instructional staff, and parents/guardians) can be open at the same time**
- **During data collection, administrators can see how many respondents have finished the survey using the “survey status reports” feature.**



SCHOOL CLIMATE SURVEY

INFORMED CONSENT

LOG OUT



EDUCATION AGENCY

Edit information about your education agency and survey administrator.

Edit



DATA COLLECTION

Create, edit, and delete data collections.

Edit



RESPONDENT USERNAMES

Generate, export, and disseminate respondent usernames for data collections that have not closed yet. Exporting usernames, importing respondent e-mail addresses, and disseminating usernames via e-mail are optional features.

DATA COLLECTION [Ⓢ]	STATUS	GENERATED	EXPORTED	DISSEMINATED
02/17/2015-02/27/2015:Students	Started	✓	✗	✗
02/17/2015-02/27/2015:Teachers/Instructional Staff	Started	✓	✗	✗

Generate

Export

Disseminate >



REPORTS

Produce real-time survey status reports and survey results reports immediately after each data collection.

Survey Status Reports >

Survey Results Reports >



SURVEY RESULTS

Export and import survey results immediately after each data collection.

Export

Import



User-generated Questions



SCHOOL CLIMATE SURVEY

LOG OUT

NEW SURVEY ITEM

SURVEY ITEM	ANSWER OPTIONS	RESPONDENT GROUP	
<input type="text"/>	<input type="text"/> <input type="text"/> +	<input type="text"/>	
Adults working at this school treat all students respectfully.	Strongly Agree Agree Disagree Strongly Disagree +	Parents	
Staff at this school give students opportunities to get involved in service projects or activities.	Strongly Agree Agree Disagree Strongly Disagree +	Non-instructional Staff	



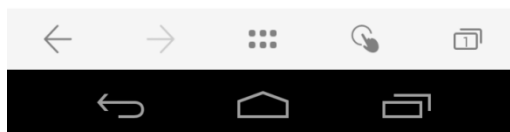
WELCOME TO THE SCHOOL CLIMATE SURVEY (SCLS)

English | [Español](#)

The School Climate Survey (SCLS) is being administered by SCLS - AIR. Your responses are important to help in understanding the environment of this school and the conditions for teaching and learning.

To start the survey, please enter your username below.

Username:





- **Includes reporting tool for providing**
 - item-level frequencies
 - domain-level scores and topic-level sub-scores.
- **Reporting tool can compare scores by school, grade level, race, and gender.**
- **Scores can be compared to national benchmarks.**

EDSCLS Reporting

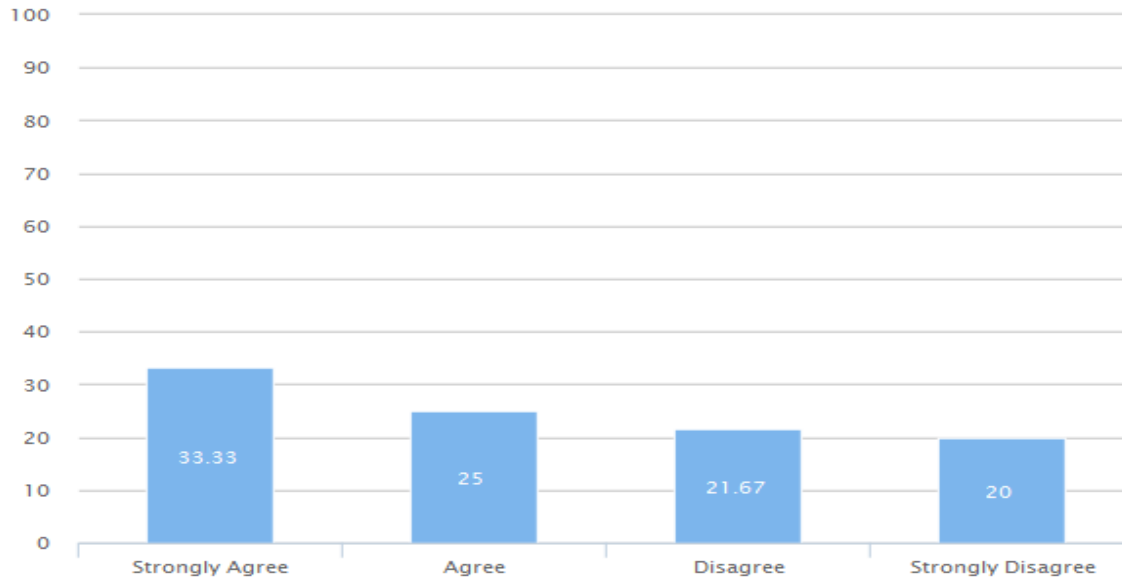
ITEM FREQUENCY REPORTING



Engagement

Cultural and Linguistic Competence

+	SURVEY ITEM	PERCENT				MEAN
		STRONGLY AGREE (4)	AGREE (3)	DISAGREE (2)	STRONGLY DISAGREE (1)	
-	All students are treated the same, regardless of whether their parents are rich or poor.	33.33	25	21.67	20	2.72

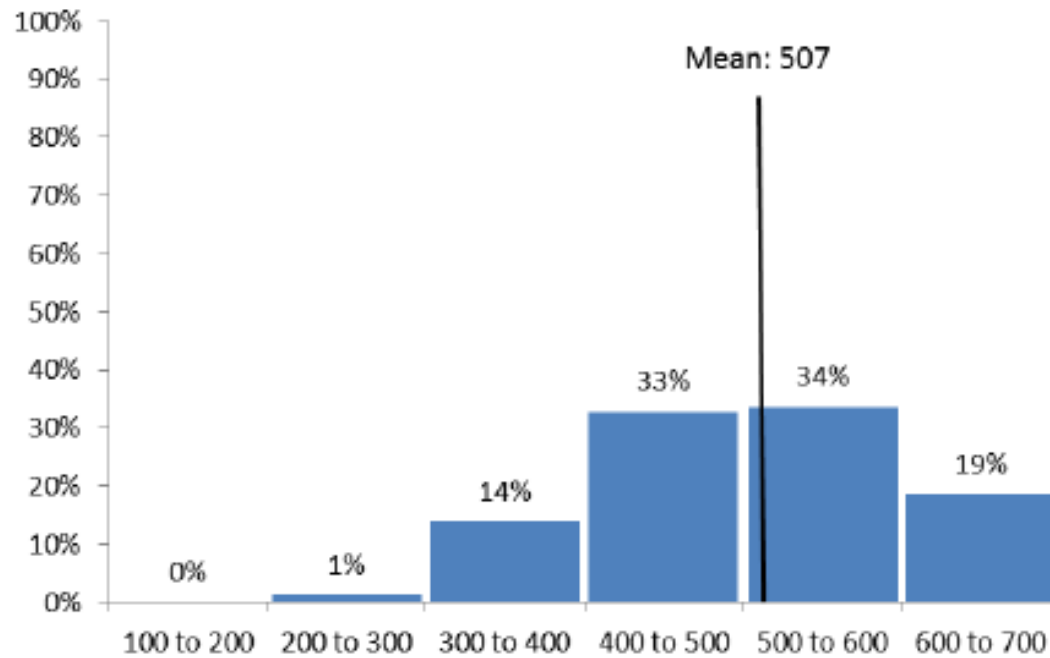


EDSCLS Reporting

DOMAIN SCALE SCORE REPORTING

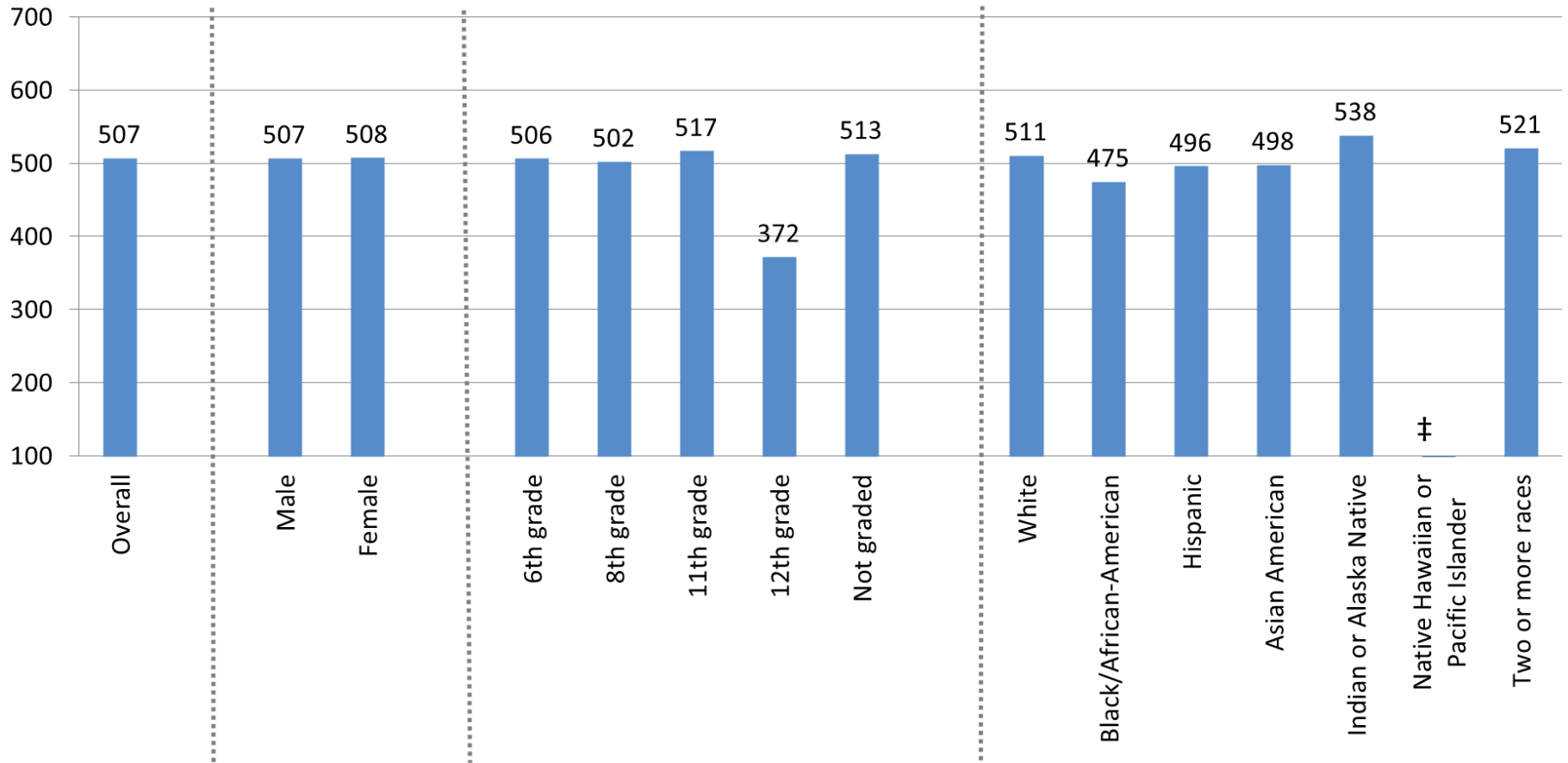


Figure 2. Percentage distribution and mean of discipline scale score distribution: Spring 2015



EDSCLS Reporting

SUBGROUP SCALE SCORE REPORTING



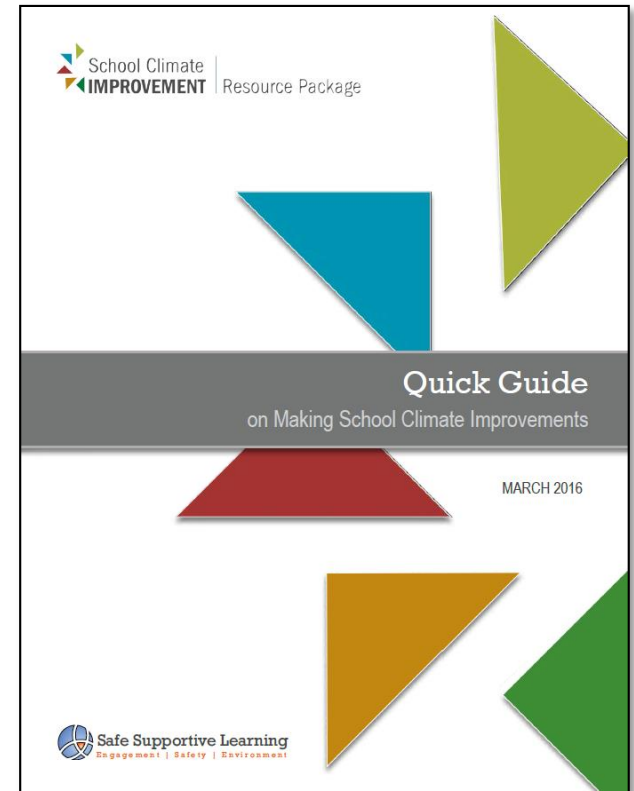
School Climate Improvement Resource Package



Safe Supportive Learning
Engagement | Safety | Environment



- **ED's National Center for Safe Supportive Learning Environments (NCSSLE) is developing a suite of resources to help school district and school leaders analyze and understand local school climate survey data, as well as practical advice and information to support the implementation and sustainability of local school climate improvement efforts.**
- **The first installment of these resources is the Quick Guide on Making School Climate Improvements.**



Goals of the SCIRP



1

Support states, districts, and schools in improving school climate via 5 sets of overarching activities

2

Help interpret the EDSCLS data

3

Provide strategies, resources and examples

4

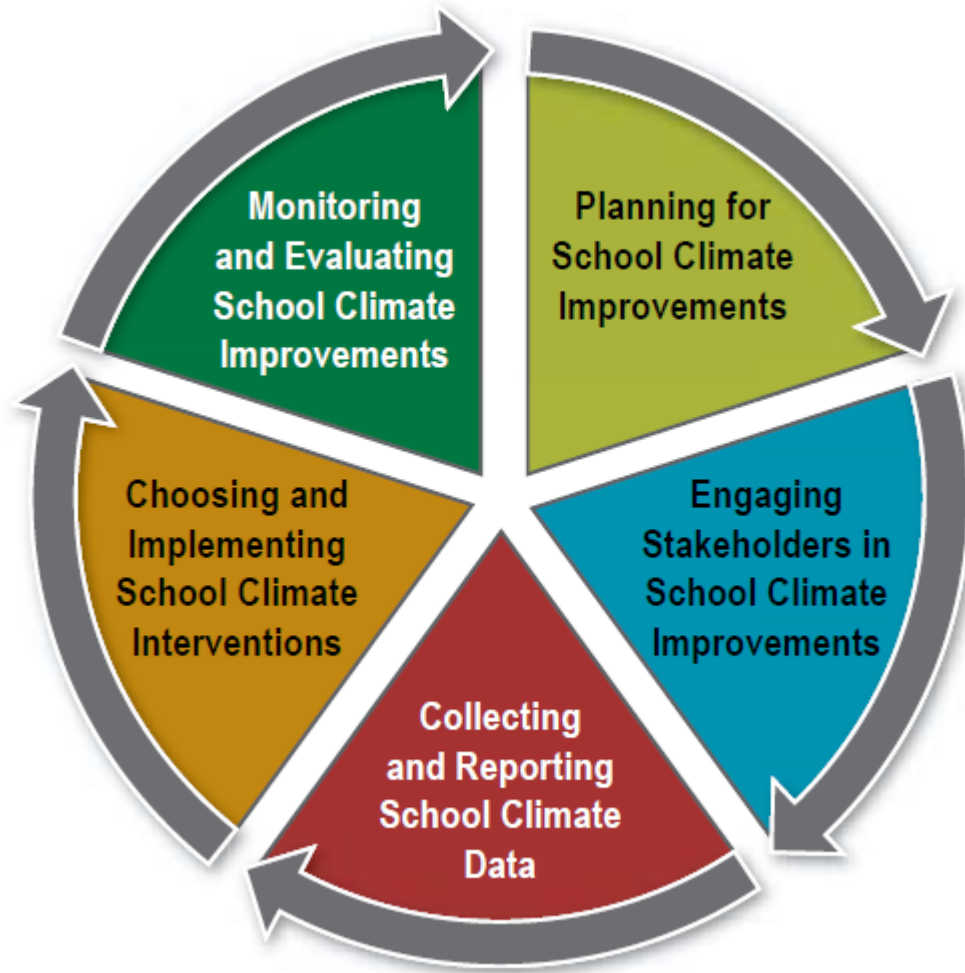
Online access to a range of resources that can help a variety of schools and districts

What Informed the SCIRP?



- **Latest research**
- **Grantees that have used school climate survey data to make improvements**
 - Range of approaches they took
 - Lessons learned
 - Successes

The School Climate Improvement Process





- 1 Quick Guide, released March 2016
- 2 Reference Manual
- 3 Action Guides for a Range of Stakeholders
- 4 Data Interpretation Guides
- 5 Online Modules
- 6 Customized List of SCIRP Items Based on an Assessment
- 7 Pointers for Improving School Climate Based on an Assessment

Questions?

